



PRESTIGE  
ALUTECH



## GARAGE DOORS PRESTIGE



STRENGTH  
OF YOUR HOUSE





Sectional garage doors

## PRESTIGE

Doors **Prestige** — is a product of unique design, integrating 20 years of ALUTECH Group of Companies experience and global technical innovations.

ALUTECH Doors **Prestige** — are European quality, simplicity and style in every detail. Reliability and aesthetics at any time of the year and in any weather.



# GARAGE DOORS PRESTIGE

## UNIQUE DESIGN

---



### EFFECTIVE THERMAL INSULATION

Energy efficiency of doors **Prestige** is equal to 60 cm brick wall, that guarantees comfortable temperature in the garage during the whole year.



### PERFECT SEALING

Frost-resistant sealings with two elastic wings ensures better thermal insulation of the opening around the door perimeter and protects the premises from precipitation, draft and dust.



### HIGH WIND LOAD RESISTANCE

Test results show that doors **Prestige** can withstand even hurricane wind of 120 km/h speed.



Exclusively for Prestige

## RESISTANCE TO CORROSION

**Prestige** doors hardware are made of stainless steel and effectively protected from corrosion even when operated in high humidity conditions.

---

## EVENNESS AND SILENCE

Double-roller system ensures smooth and silent doors operation. (Option)

---

## CUSTOMIZED DESIGN

5 types of sandwich-panels, up to 10 standard colours. Exclusive colour "Graphite", wood-finished colours, and more than 200 colours according to RAL or Deutsche Bahn. Individual patterns by digital printing.



### RELIABLE SAFETY

Doors **Prestige** comply with the requirements of international safety standards: EN 12604, EN 12453, EN 12424, EN 12425, EN 12426. All the protection mechanisms are delivered in standard set and without extra charge.



### 10 YEARS WARRANTY

Enhanced 10 years warranty against perforated corrosion is provided for a door leaf and other steel elements of **Prestige** doors.



### DURABLE OPERATION

Steel sheets in ALUTECH sandwich panels are interlocked and have a closed contour. This design ensures protection against delamination during abrupt door opening/closing and overheating under the sun and extends door operation life.

# ENERGY- EFFICIENCY

## ECONOMY ON HEATING

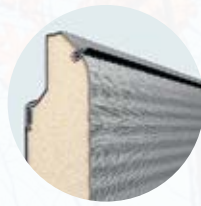
---

Doors **Prestige** have advanced thermal insulation, better durability and corrosion resistance. The doors are the best solution for operation in premises with high humidity and in regions with rigorous climate.



When you choose energy efficient technologies, you save your means and natural resources, thus taking care about future generations.





## “WARM” SANDWICH-PANEL

Sandwich-panels of 45 mm thickness ensure high energy efficiency as they are one of the most thick and warm in Europe.

---



## RELIABLE SEALING

Adjustable roller brackets ensure close doors adjoining to the opening.

---



## ADAPTATION TO HEAVY FROST

Two-wings EPDM-sealing preserves flexibility even at low temperatures. Air chamber between the wings provides additional thermal insulation.



## PROTECTION AGAINST DELAMINATION

Closed contour of steel sheets protects sandwich-panels against delamination. Therefore, the doors preserve attractive look for many years.



## INTENSITY OF OPERATION

Spring life-time is 25 000 open-close cycles. That corresponds to 17 years of operation with 4 open-close cycles a day.



## ADAPTATION TO HIGH HUMIDITY

Fittings of stainless steel AISI430 guarantee reliable doors operation and resistance to corrosion even when installed in coastal areas and premises with high humidity





# LONG-TERM OPERATION

## PROFITABLE INVESTMENT FOR MANY YEARS

---

Doors **Prestige** work smoothly during the whole period of operation, thus save time and money on repairs and keep aesthetic look.



# MAXIMUM PROTECTION AND COMFORT

EASE AND CONVENIENCE  
EVERY DAY

---

Doors **Prestige** operate smoothly and silently, without disturbing peace and sleep of your family.



Exclusively for Prestige





## SILENT OPERATION

Double rollers ensure almost silent moving of door leaf. (Option)

---



## EASE OF USE

Spring mechanism is used to compensate the weight of the door leaf, for that reason doors of any dimensions could be opened and closed easily in manual mode.

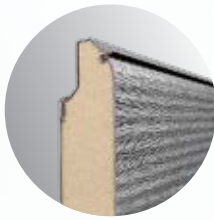
---



## SMOOTH OPERATION

Closed type rolling bearings ensure smooth operation of doors. They are reliably protected against dust and there is no need to change the lubricant.





## PROTECTION AGAINST FINGER TRAPPING

Special configuration of panels ensures protection against finger trapping outside and inside of the garage.

---



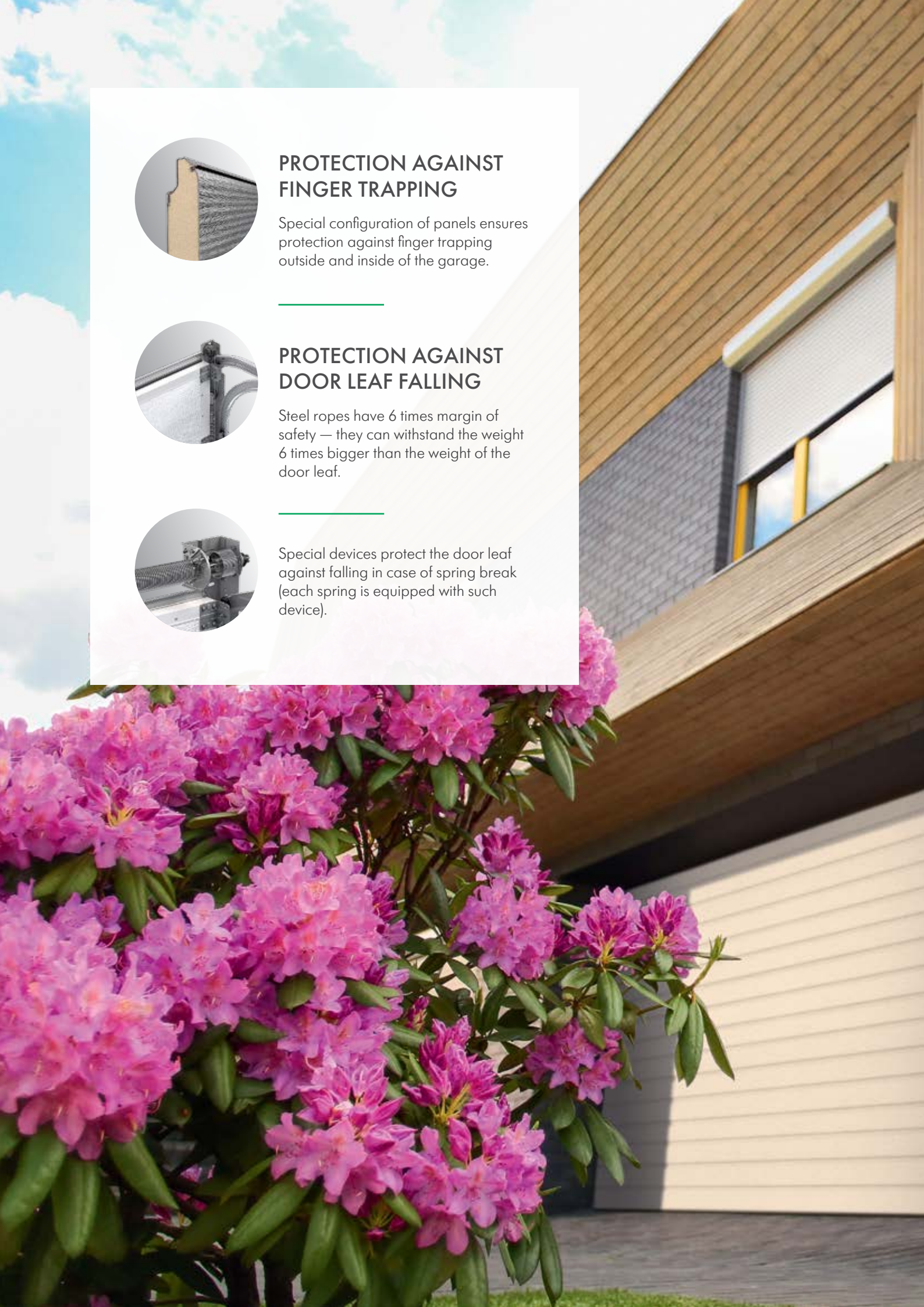
## PROTECTION AGAINST DOOR LEAF FALLING

Steel ropes have 6 times margin of safety — they can withstand the weight 6 times bigger than the weight of the door leaf.

---



Special devices protect the door leaf against falling in case of spring break (each spring is equipped with such device).





# SAFETY FOR THE WHOLE FAMILY

## COMPLIANCE WITH EUROPEAN STANDARDS

---

Doors **Prestige** comply with the requirements of European standards EN 12604, EN 12453, EN 12424, EN 12425, EN 12426. All the protective mechanisms are already included in standard set and delivered without extra charge.



# HIGH-QUALITY PRODUCT

## THREE-LAYER COATING OF SANDWICH-PANELS



**45 mm** doors  
Panel thickness **Prestige**



### Three-layer coating ensures doors high resistance to corrosion:

- Zinc coating — 16 microns.
- Polyurethane primer coating 14-16 microns.
- Decorative coating PUR-PA 20-25 microns.

**Coating PUR-PA** (polyurethane coating modified with polyamide particles) has high resistance to the following factors:

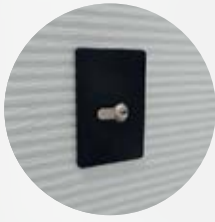
- Scratches and scuffs.
- Negative impact of environment and household detergents.
- Temperature and humidity fluctuations.

**Special adhesive varnish** reliably couples panel steel sheets with insulant, that prevents sandwich panels from delamination because of solar heating.

**Four layers of metal** in places of self-tapping screws positioning ensure high durability: panels remain undamaged even in case of abrupt doors closing.



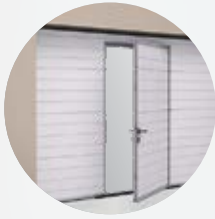




## BREAK-IN PROTECTION SYSTEM CLASS RC2

It is used for additional safety and integrity of property.

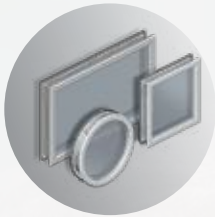
---



## INBUILT WICKET-DOOR

Enables access to the garage without entire opening of the doors. As a result, product life-time is extended and extra heat losses are excluded.

---



## INBUILT WINDOWS

With different forms, glazing types and frame colours, they are used for additional lighting of the garage.

---



## AIR GRIDS

Ensure natural air supply to the garage. Not-adjustable and adjustable options are available.

---



## KEY LOCK

Enables opening/closing of doors from outside and inside, that is required for garages without additional entrance.





# FUNCTIONAL SOLUTIONS

## EXTRA ACCESSORIES AND OPTIONS

---

Set of additional solutions for garage doors **Prestige** make them even more functional and convenient in operation.



Exclusively for Prestige

# STYLISH DESIGN

## WIDE RANGE OF PATTERNS AND COLOURS

When you choose **Prestige** products you can be sure that doors will be customized according to your personal preferences and exceptionally in style you prefer.

The doors are manufactured individually for each opening with 5 mm increment in height and width without extra charge.



Exclusively for Prestige

---

5

TYPES OF SANDWICH PANELS

---

10

STANDARD COLOURS

3

WOOD-FINISHED COLOURS

---

210 RAL COLOURS

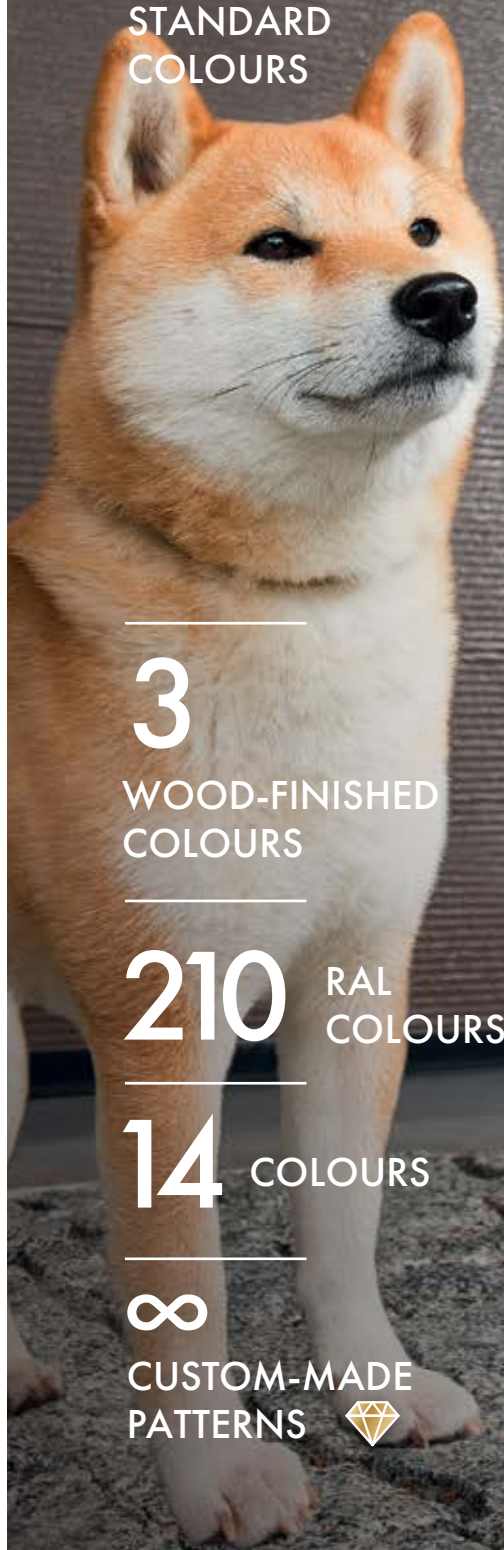
---

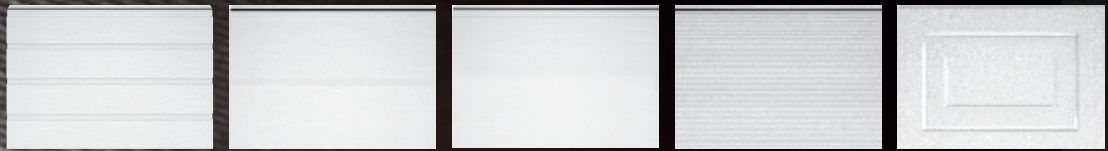
14 COLOURS

---

∞


CUSTOM-MADE PATTERNS 





Woodgrain Smooth Woodgrain Smooth Woodgrain Smooth Woodgrain Woodgrain

S-ribbed M-ribbed L-ribbed Microwave Cassette

RAL 9016	●	● ●	● ●	● ●	●	●
RAL 9006	○				○	
RAL 1015	●				●	
RAL 8014	●	●	●		●	●
RAL 8017	●				●	
RAL 5010	●				●	
RAL 3004	●				●	
RAL 6005	●				●	
RAL 7016	●	●	●	●	●	
ADS 703	●		●	●	●	
ADS 704 		●	●			

Golden oak	●	●	●		●	
Dark oak	●	●	●		●	
Cherry	●	●	●			

Catalogue RAL	●	●	●	●	●	●	●
---------------	---	---	---	---	---	---	---

Catalogue Deutsche Bahn	●	●	●	●	●	●	●
-------------------------	---	---	---	---	---	---	---

Application of custom-made patterns of any complexity by digital printing with additional varnish coating

## EXCELLENT PRINTING QUALITY

We use high quality UV-ink from European manufacturers. During photopolymerization a special layer is created on a sandwich panel, and due to this layer the ink does not soak into the panel.

---

## CLEAR PICTURE

The image applied on the doors boasts of maximum sharpness. Even minute details of the image will be clear after printing on the leaf.

---

## RESISTANCE TO ULTRAVIOLET LIGHT

Digital lacquer protects image from ultraviolet rays. It stays bright for 10 years of operation at the least.

---

## PROTECTION AGAINST BAD WEATHER

The materials used for printing the images are resistant to temperature drop and humidity level variations. The doors with digital print may be operated in any region.

---

## RESISTANCE TO MECHANICAL IMPACT

Due to special protective lacquer made in Europe, the panel surface is resistant to scratches and other mechanical impact.

---

## SHORT TERMS OF PRODUCTION

Technical parameters of the printer allow to complete orders on individual printing within 5-7 days.



# INDIVIDUAL DESIGNS

## PRINTING ON THE DOOR LEAF

In **Prestige** series doors we have implemented a unique possibility to create an individual door pattern using digital printing.

Unique textures of fine wood, a collection of images with natural stone textures, a variety of theme prints – the design possibilities are endless.

Polyurethane lacquer

UV printing ink

PUR-PA coating **20–25 mcm**

Polyurethane primer **14–16 mcm**

Zinc **16 mcm**

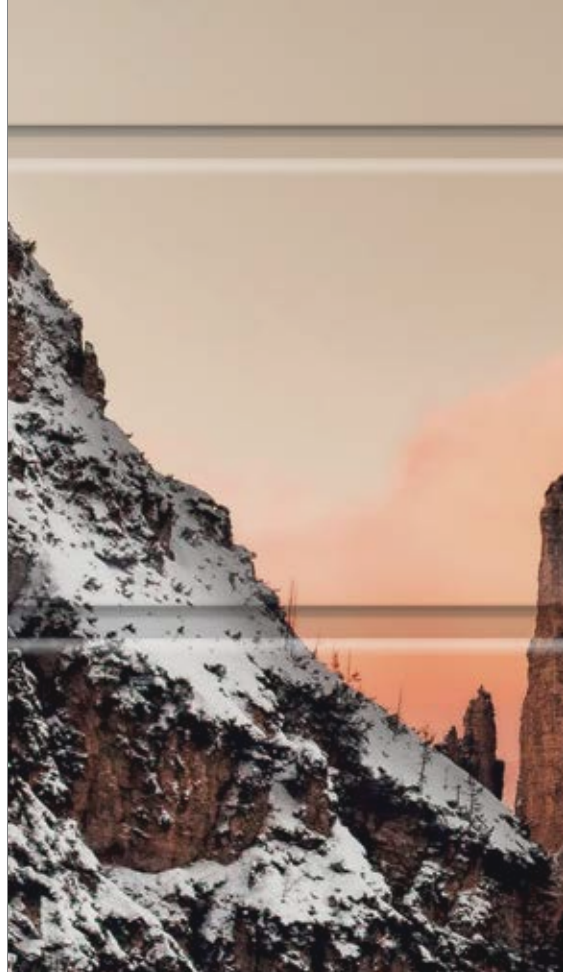
Steel **0,4 mm**



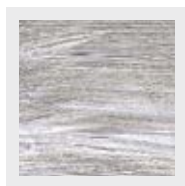
# VARIETY OF SOLUTIONS

## PORTFOLIO OF TEXTURES AND PRINTS FOR STYLISH DOORS

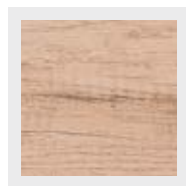
With digital printing, we can apply any image on the leaf of **Prestige** series doors, making them a bright center-piece in the exterior. There are millions of options!



### WOOD DESIGN



White oak



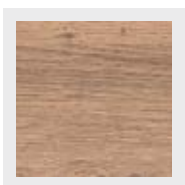
Desert Oak



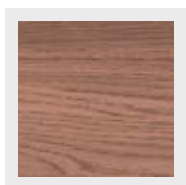
Mountain Pine



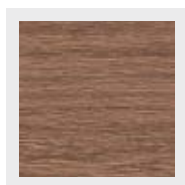
Oregon



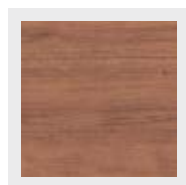
Irish Oak



Light Winchester



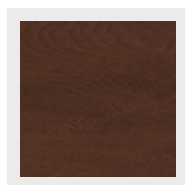
Light Oak



Rustic Cherry



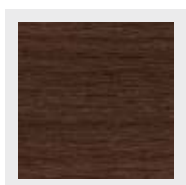
Anteak



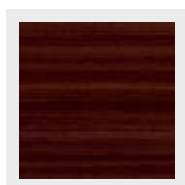
Walnut



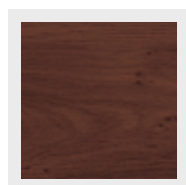
Swamp Oak



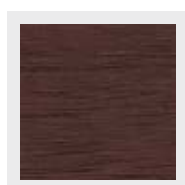
Rustic Oak



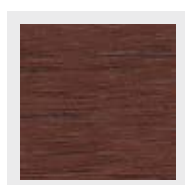
Mahogany



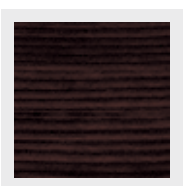
Dark winchester



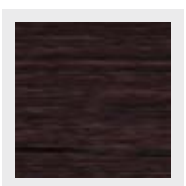
Dark Siena



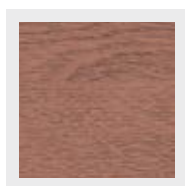
Light Siena



Wenge Classic



Wenge Modern



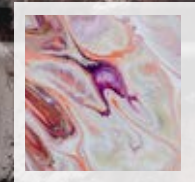
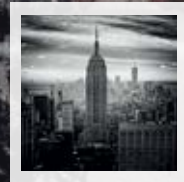
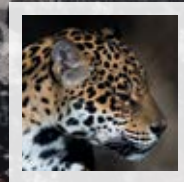
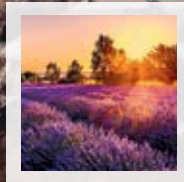
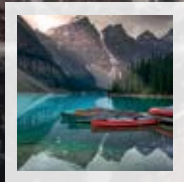
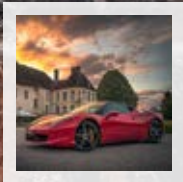
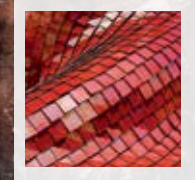
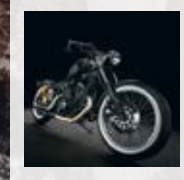
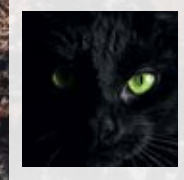
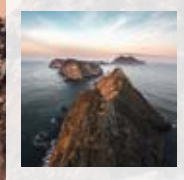
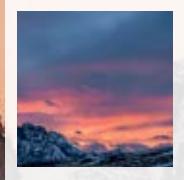
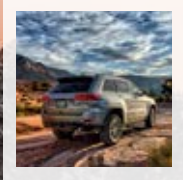
Winchester Classic



All theme prints and printing rules as well as copyright policy you can find at the official website of ALUTECH Group or ask your regional manager.

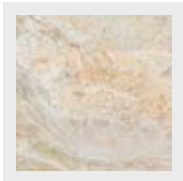
The finished doors may appear slightly different in colour compared to the doors on pictures or exhibition samples. Due to some technical reasons colour shades of products from different delivery lots may slightly vary.

# EXCLUSIVE PORTFOLIO OF THEME PRINTS

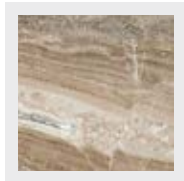


## NATURAL STONE DESIGN

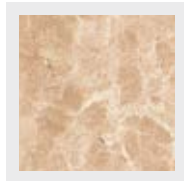
## EXTRA DESIGN



Breccia Damascata



Daino Reale



Emperador Light



Grey Concrete



Dark Concrete



Wet Concrete



Platino Dark



Celebrity



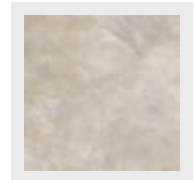
Maroon Marinace



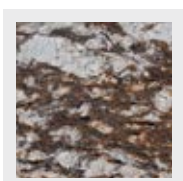
Light Concrete



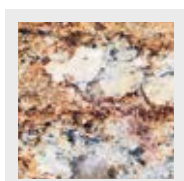
Concrete Anteak



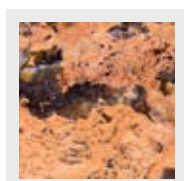
Natural Marble



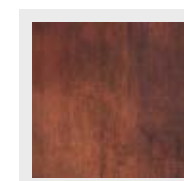
Delicatus Gold



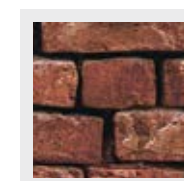
Sagitario Granite



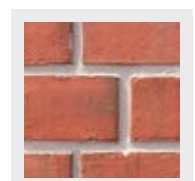
Juparana Bordeaux



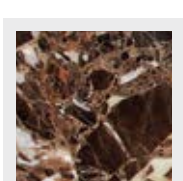
Copper Sheet



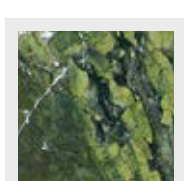
Aged Brick



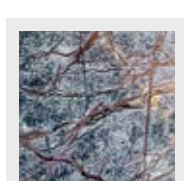
Red Brick



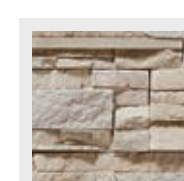
Emperador Dark



Verde Fantastico



Bidasar Brown



Light Slate

ALUTECH Group of Companies  
PATENT 

**Built-in LED-lighting.**

**Operability**

In wide voltage range (160-270 V).

**Life-time is at least 30 000 cycles,**

what corresponds to 20 years of everyday operation.

**Broad applicability:**

For the doors up to 18,6 m<sup>2</sup>.

**High speed of doors opening:**

Up to 20 cm/sec.

**Control without electric power**

with external battery backup.

**Built-in safety system:**

Door leaf will be stopped automatically if meet an obstacle on the way.

**Yard territory lighting control**

With remote control.

ALUTECH



# AUTOMATED CONTROL

## SMART SOLUTIONS FOR COMFORTABLE LIFE

---

Garage operators **Levigato** with built-in LED-lighting — is a cooperative development of ALUTECH Group of Companies specialists and leading European designers for even more functional and comfortable doors control.



**3** THREE  
YEARS  
WARRANTY  
OF AUTOMATICS



# GARAGE DOORS PRESTIGE STRENGTH OF YOUR HOUSE

ALUTECH Group of Companies approach the issue of comfort comprehensively and offer a wide range of solutions for your comfort and safety.

---

### **Entrance gates**

Sliding and hinged gates, side doors and fence sections.



### **Roller shutters systems**

Roller shutters systems for window-door openings.



### **Aluminium profile systems**

for window-door openings.





ALUTECH Group of Companies holds leading positions on the roller shutters systems and sectional doors markets in Western and Eastern Europe, and is a leading manufacturer of aluminium profile systems in CIS region. The holding consists of 5 manufacturing enterprises and more than 20 sales companies in CIS and Europe.

All the enterprises of the Company are equipped with high-technology equipment, which includes:

- aluminium and steel coils coating and cutting complex;
- roll-forming lines;
- automated die-casting complexes;
- door leaf and sandwich panels production lines for sectional doors;
- automated storage and products sorting systems;
- casting complex for aluminium ingots production;
- aluminium extruded profiles production lines;
- horizontal and vertical powder coating lines;
- CIS largest complex for anodizing of aluminium profiles.

Due to the own production complexes within the company specialists of ALUTECH Group are able to control the quality of the products at all the stages of industrial process: from project development and purchase of raw materials to creating of finished products and their packing. The quality management system of all enterprises has been certified in compliance with the requirements of ISO 9001 and ISO 14001 international standards.

ALUTECH Group of Companies regularly expand its product range with new technological solutions taking into account market demands. Therefore, holding's assortment includes not only protective systems, but also docking equipment for storage and logistic centers effective operation (dock shelters, dock levellers, dock houses and loading platforms), automation systems for sectional doors and entrance gates as well as operators with internal receiver for roller-shutters systems.

ALUTECH products are installed on millions of sites and supplied to more than 65 countries of CIS, Europe, Asia, Africa, North America and Australia.



**ALUTECH**  
GROUP OF COMPANIES

