

D I S C O V E R



THE ALL-NEW DATA  
MANAGEMENT SOLUTION






Discover the next generation in data management. Streamline your practice workflow with an all-new user-interface that leverages Topcon's extensive instrument knowledge and displays your data in clinically meaningful ways.

---

Topcon Harmony's intuitive design organises all of your data within a single screen. Utilising a responsive interface enables you to view data from a traditional PC or on the go with your mobile device. It's easy to use and feature-rich – Topcon Harmony gives you quick access to your exam data. Perform a historical comparison and easily scroll through the report history and OCT images.



Improve workflow with fewer clicks, seamless EMR integration and control over the instruments in your practice.

---



Historically, medical professionals have used paper records to manage patient exam information. Recently, these same professionals have been required by Meaningful Use Standards to digitise all patient data. New standards have created a disconnect between practitioners and their patients – requiring them to spend more time in front of screens juggling many windows at a time.

Topcon Harmony changes this with a new interface that reduces time spent managing patient exam data by giving practitioners and staff fewer clicks, seamless EMR integration and control over the instruments in their practice, regardless of the manufacturer.

## TECHNICAL FEATURES

- Responsive browser-based application
- Complies with HIPAA and security compliance standards
- Audit trail
- HL7 Integration for Bi-Directional communication with any EMR<sup>1</sup>
- DICOM Compliant<sup>2</sup>

## RELATED FEATURES

- Site/location-based user permissions
- LDAP support<sup>3</sup>
- Statistical reports of device usage

1. Optional Feature
2. DICOM Conformance Statement available upon request
3. Available for on-premise deployments



**TOPCON**  
HARMONY

## FEATURES AT A GLANCE



Topcon Harmony connects with hundreds of devices, from all manufacturers – DICOM or not.



Direct clinical data display combined with Topcon's extensive medical instrument experience.



Responsive browser-based application that adapts to your desktop or your mobile device, such as an iPad.



Follows user-interface guidelines established by leading software companies.



Feature rich, with advanced Historical Comparison of multiple instruments.



No time spent entering patient information at the instrument.



Part of a comprehensive software suite of applications that share common user-interface.



On-site or in the cloud.



Easily scroll through your OCT images.





## Data management. Simplified.



### Reducing costs

Harmony supports instruments from all manufacturers, eliminating the need for third party software while allowing users to centrally view relevant data on a single screen.



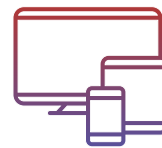
### Minimizing errors

Using Harmony's integrated workflow, patient information flows seamlessly from an EMR directly to the device, through Harmony and back, reducing human errors.



### Feature Rich

Using Harmony's multi-device comparison and historical displays, users can streamline clinical decision and increase diagnostic confidence.



### Ease of Use

Harmony's browser-based applications and clear structure make the software easy to use, allowing users to save valuable time.

Learn more about  
Topcon Harmony today.

[topconharmony.eu](http://topconharmony.eu)

